



Intelligent Robotics Capture (IRC)

New generation of automation



Traditional Capture Challenges

Traditional Capture Challenges



OCR Technique

Zonal OCR Based Recognition

- Existing solutions depend on Zonal OCR capture to extract information from original documents. This makes it very hard to capture information from documents that can spread into multiple pages.
- The zonal areas is always affected by the document size or resolution because it depends on a specific coordinates to capture the required data.

Platform and Integration

Platform Dependent & Integration Difficulties

- There are few solutions in the market that provide advanced capture features that are not tight to a specific DMS or ECM Brand.
- Independent solutions usually need to provide integration mechanism to be transfer capture results to a user selected solution. This integration mechanism usually requires writing a custom code to have the task done which leads to the complexity of maintaining the integration code all the time.

Cost of Ownership

License Price and Annual volume package cost

- Almost all the existing solutions charge the users based on the annual volume of captured pages.
- If Annual volume is not the case, then the ownership license cost is very high.

Language Support

Variety of supported Languages (Specifically Arabic)

- Most of the existing Capture Solutions Lack the Arabic support or the ability to embed it through integration or Third Party SDK.

Traditional Capture Challenges



Capture source

Other than scanned or electronic documents

- Capturing data from other sources usually requires additional modules or different solution to be purchased and implemented separately.
- Almost non of the existing solutions in the market provides extracting information from multiple sources such as webpages, audio files, hand-written documents, or video files in a single package.

Content Publishing

Publish output results to legacy or mainframe systems

- When the target system is considered locked (Such as Mainframes) or legacy (Does not support latest integration technologies), It will be impossible to publish the captured documents and metadata to them automatically. Only manual option is valid in this case. The result of this is usually a manual repetitive task.

Nothing beyond capture

Automate or initiate processes once capture is done

- The job of any capture system ends directly after publishing documents to the destination system. It cannot do any action beyond this.



IRC Features

Document Structure Recognition



When configuring IRC, We teach it how to capture what we need to capture wherever it is found in the source document.

The system will then search for the target data across the document and capture the required information.

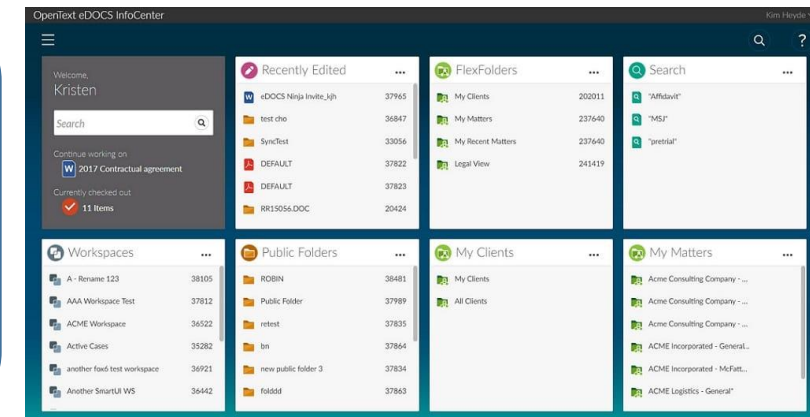
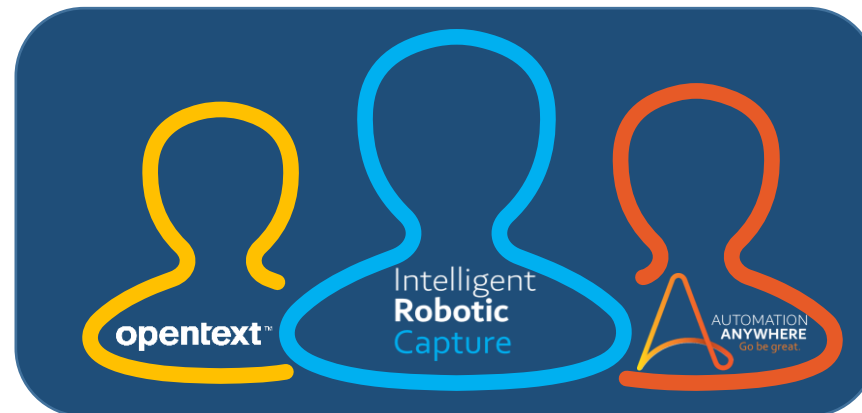
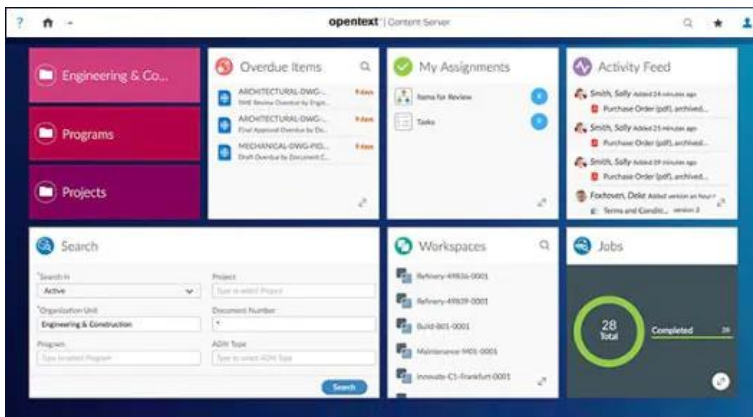
No Zonal OCR is configured. Therefore, coordinates are not stored as part of the configuration step.

Solution and Platform independent



ICR can be configured to publish the processed content to any system on any platform without a need to write any integration code or script.

ICR comes with preconfigured settings to publish processed content into OpenText Content Server or OpenText E-Docs.

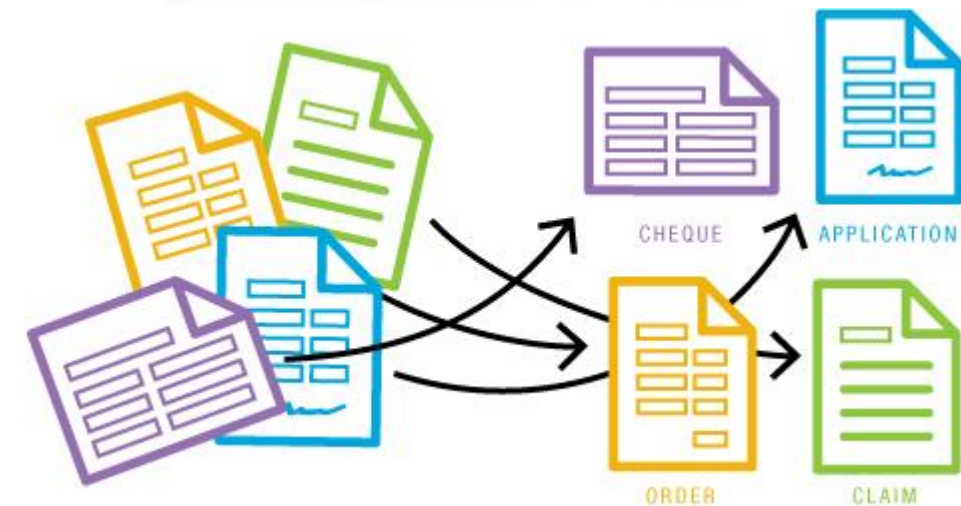
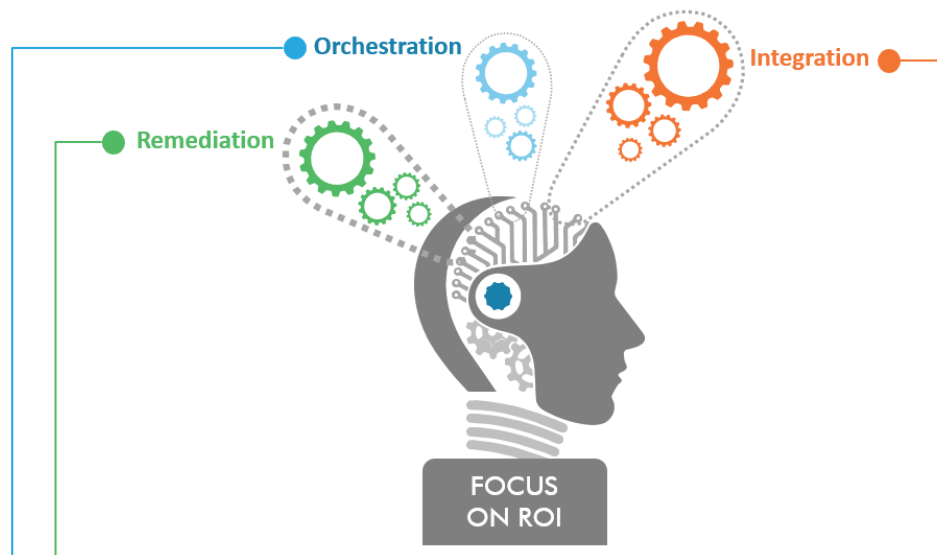


Time Saving and Cost effective



Adapting Robotics Technologies reduces human errors and gives much higher accuracy rate.

Automatic classification and indexing of content is done with almost no time. This will increase organization productivity.



Multi-Language Recognition Support



IRC supports the recognition for around 60 Languages including Arabic Language

Documents with multi-language content can be processed without the need to change the language profile and do double work

Learning instances > AA Demo Screenshot > Review group 2181 mapping

Review group 2181 mapping 2.png View: arab (Demo 2181 Document)

See extraction results Save and close

Learning source:

- Click each field (left panel) to verify the label and value (center panel) is the same as the document (right panel).
- Preview the mapping after all fields are verified.
- Save and go to the next group.

Fields

- Permanent Address
- Issuing Authority
- Date of Issue
- Date of Expiry
- Document No
- Place of Issue

Field - Document No

Data type: text

Field label: DOCUMENT NO.

Field value: DUBA01234562

Field options:

UNITED ARAB EMIRATES PASSPORT

الإمارات العربية المتحدة جواز سفر

العنوان الثابت
101, JUMEIRAH BEACH RESIDENCE
DUBAI MARINA, P.O.BOX: 12345
DUBAI, U.A.E.

العنوان الثابت
101, جميرا بيتش ريزيدنس
دبي، ص.ب. 12345
الإمارات العربية المتحدة

سلطة الإصدار
الإمارات العربية المتحدة وزارة الداخلية

U.A.E. MINISTRY OF INTERIORS

تاريخ الإصدار: 01 / 01 / 2012

تاريخ الانتهاء: 31 / 12 / 2022

مكان صدوره
دبي، الإمارات العربية المتحدة

PLACE OF ISSUE: DUBAI, U.A.E.

DOCUMENT NO: DUBA01234562

DATE OF ISSUE: 01 / 01 / 2012

DATE OF EXPIRY: 31 / 12 / 2022

PLACE OF ISSUE: DUBAI, U.A.E.

DOCUMENT NO: DUBA01234562

P<AREZA91449103784196865703050
6807278M2212315AREDUBA01234562
ABDULLA<<AHMED<MOHAMED<<<<<<<<

1 of 1 pages or Go to page

Zoom in Zoom out Fit to screen

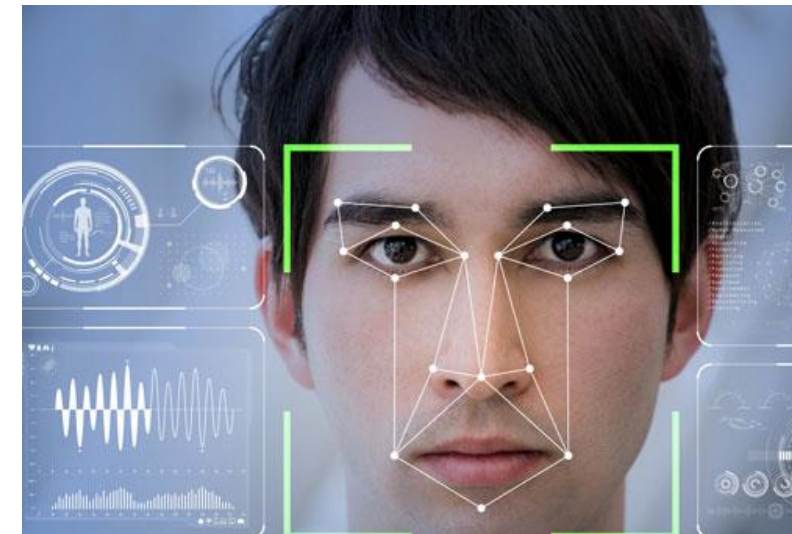
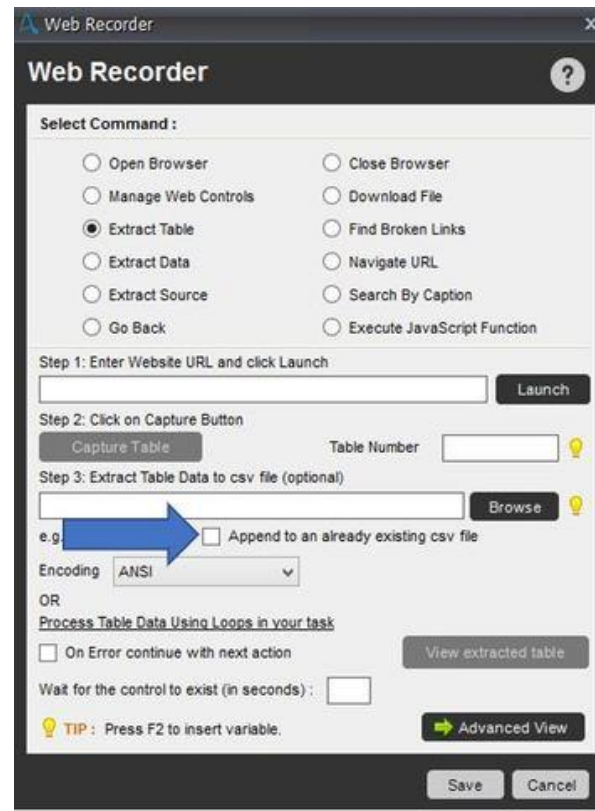
Variety of Content Sources



Ability to capture content from many sources including Webpages, web applications, email client, video and sound files, desktop applications, and others.

Winter is here. Go to the store and buy some snow shovels.

Winter is here. Go to the store and buy some snow shovels.



With robotics capabilities, IRC can be configured and learn how to publish content into different destination applications without the need to write integration related code or script.

The robot in IRC can act as a human user. It can login to any system, navigate windows or pages, perform the needed tasks on behalf of the user.

The actions can be taken continuously 24/7, fast, and accurately.



Machine Learning is embedded as one of the capabilities.

The system can automatically identify the incorrectly or inaccurately captured content and notify the user to act.

The system will learn from Human actions and perform the tasks automatically after that to deal with such situations.



IRC can transfer content and perform needed actions to import the content to Locked systems without any security vulnerability.

IRC can also perform actions on legacy systems that have no integration layer on the application level.



IRC can take a step forward to perform automatic actions after content processing.

IRC is capable of:

- Trigger a workflow in a workflow system
- Add a task to a user task list
- Resolve content duplication
- Generate reports
- Publish content so Social Media
- Others.

